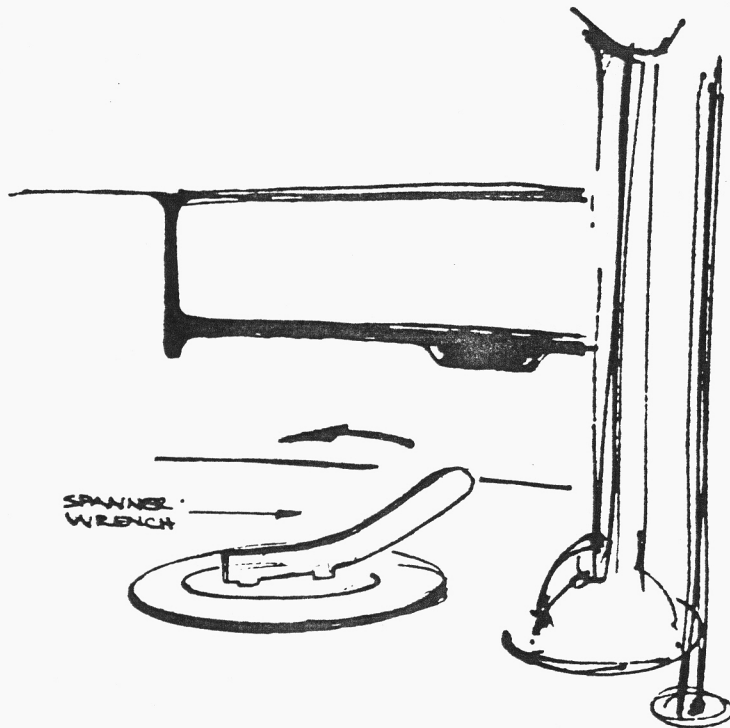


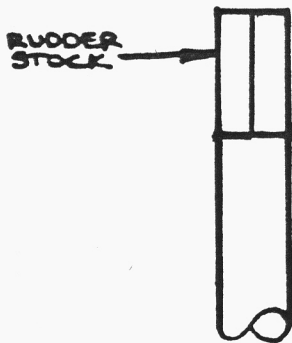
EMERGENCY TILLER INSTALLATION



A dry run of your emergency tiller system in stable conditions will lessen confusion in times of crisis. Before casting off make sure you have not left your emergency tiller and spanner wrench ashore. Once aboard make sure the emergency tiller is stowed in an easily accessible place and not under a pile of gear at the bottom of the sail locker.

The rudder stock access plate requires regular lubrication to keep it from seizing. This plate is located in the aft portion of your cockpit above your rudder stock. When necessary, the plate can be removed with the spanner wrench as illustrated. The access plate's removeability is insured by the accessibility of your spanner wrench. Keep it available.

When access to your rudder stock is achieved, the square end of the emergency tiller can be fitted to the rudder stock. Some boats can be steered with the tiller straight forward; on others it will have to be off to the side to clear the wheel.



NOTE: The emergency tiller will move the whole steering system so each part including the cable and rudder must be clear.

