

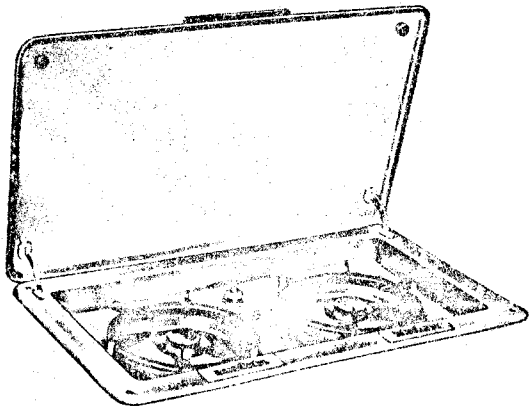
# Kenyon Marine

---

## OPERATING MANUAL AND INSTALLATION INSTRUCTIONS

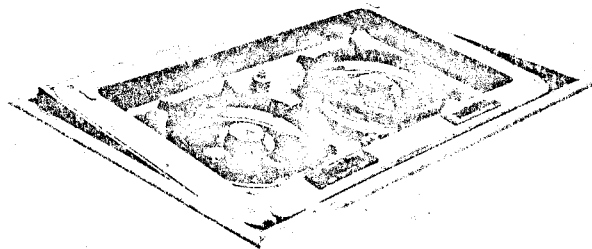
### HOMESTRAND

TWO-BURNER RECESSED ALCOHOL STOVE



MODEL 206

GIMBAL MOUNTED TWO-BURNER  
ALCOHOL STOVE



MODEL 211/209

PLEASE KEEP THIS MANUAL ABOARD YOUR BOAT

## INTRODUCTION

Kenyon Marine-Homestrand stoves have been engineered exclusively for marine use. The design considerations and the materials used were dictated by the requirement for a reliable, long life and low maintenance stove, operating in a salt atmosphere.

The Operation Instructions which follow are for the Models 206 and 209 stoves. Model 209 is a Model 206 less the hinged cover, for mounting in the Model 211 gimbal kit. Any Model 206 stove can be adapted with the Model 211 gimbal kit at a future date.

## OPERATION INSTRUCTIONS

**To Fill:** Unscrew filler cap. Fill tank with denatured ethyl alcohol using a funnel. Replace cap. Filler cap is equipped with a safety valve and must not be replaced by any other type cap.

**To Start:** Pump 20 or more times to pressurize fuel tank. Pump is located at front of stove.

**To Operate:** Burners must be preheated to produce vaporized alcohol. Slowly open (counter clockwise) one burner at a time to allow alcohol to flow into priming cup below the burner body. Fill priming cup 3/4 full (about 1/4 oz). Shut off burner (clockwise) and ignite priming alcohol. When this alcohol is fully consumed, turn control wheel toward open position and light burner.

**DO NOT PUT COOKING UTENSILS ON STOVE UNTIL BURNERS ARE FUNCTIONING PROPERLY.**

**CAUTION:** FLARE-UP may occur during preheating and particularly if burner valve is opened before preheating is completed. Follow starting instructions very carefully. If flare-up occurs, shut off burner and re-start as per instructions "To Operate."

**To Shut off Burner:** Turn control wheel to extreme right. Release pressure in tank by loosening filler cap.

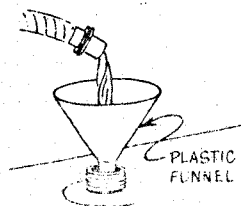
**To Clean Burner Nozzle:** Turn control wheel to extreme left position. This will automatically clean deposits from nozzle. Then return to extreme right.

**DO NOT ATTEMPT TO FILL BURNER FLANGE — PRIMING CUP IS BELOW BURNER BODY**

### HOW TO LIGHT YOUR HOMESTRAND ALCOHOL STOVE

#### 1 FILL TANK

FILL 3/4 FULL WITH ALCOHOL





PLASTIC FUNNEL

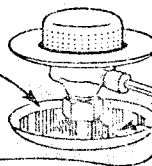
#### 2 PUMP

PUMP 15-20 TIMES TO PRESSURIZE TANK




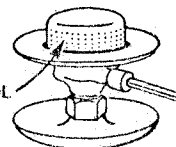
#### 3 PREHEAT BURNER

OPEN VALVE  MOMENTARILY TO FILL PRIMING CUP 3/4 FULL THEN... CLOSE VALVE  AND LIGHT ALCOHOL



#### 4 LIGHT BURNER

WHEN PRIMING ALCOHOL IS COMPLETELY CONSUMED OPEN VALVE  AND LIGHT VAPORIZED ALCOHOL



# INSTALLATION INSTRUCTIONS

## MODEL 206

**Note:** Installation should comply with applicable standards of the ABYC and/or the "Fire Protection Standards for Motor Craft, NFPA #302." Be sure to provide adequate ventilation, permanent and secure fastening of the stove and protection for all surrounding woodwork.

**Cutout:** A cutout with dimensions shown below is required. Make sure there are no obstructions beneath countertop within two inches behind edge of cutout where rear of stove is to be located. Draw two lines as indicated on sketch to help center stove in cutout.

**Insulation:** Nail insulation to edge of wood in cutout. (See sketch below.) The entire cutout must be lined. A 5-1/2-ft. length of insulation is supplied with stove. Cut out lining at both rear corners as shown on sketch, up to lower edge of countertop wood—required to provide proper clearance for lidstays when lid is closed.

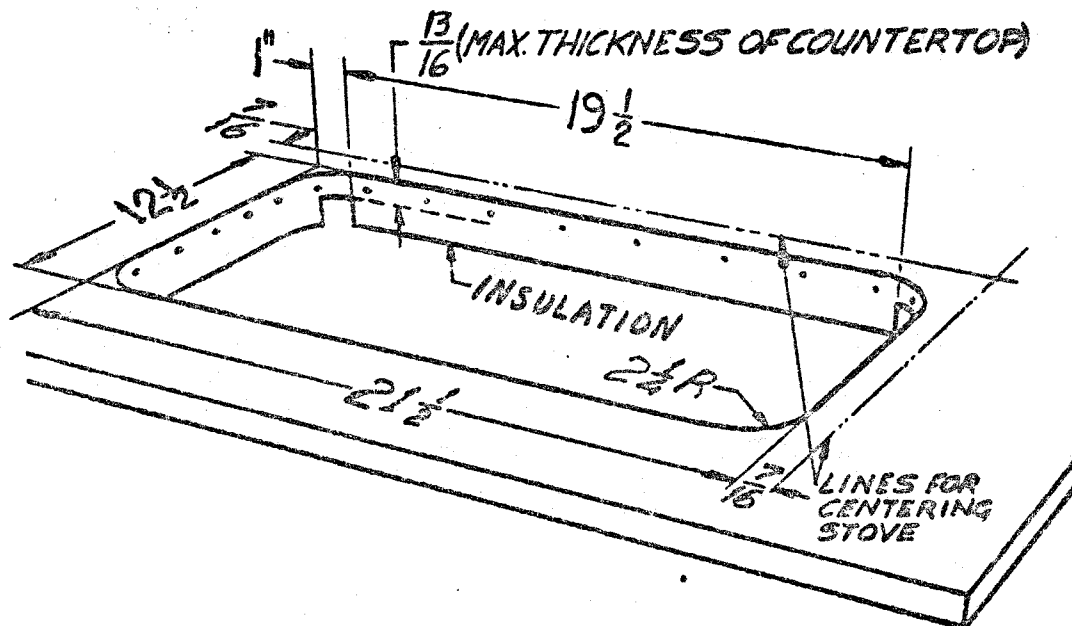
**Stove Installation:** Open stove lid to locked position and bring stove to either end of cutout. Raise stove end furthest from cutout so that stove is slanting, and slide lower end into cutout. Care should be exercised so as not to damage control wheels.

Center stove with help of lines already drawn on countertop. Mark centers of four fastening holes. Remove stove in same manner as inserted. Drill four holes with 3/32 (.093) drill diameter. Reinstall stove and secure in each corner with #6 x 3/4" oval head wood screws.

**Note:** Before stove is secured a slight bowing may be noticeable on flanges. This is an intentional design feature to provide a tight seal around flange once stove has been tightly secured in each corner.

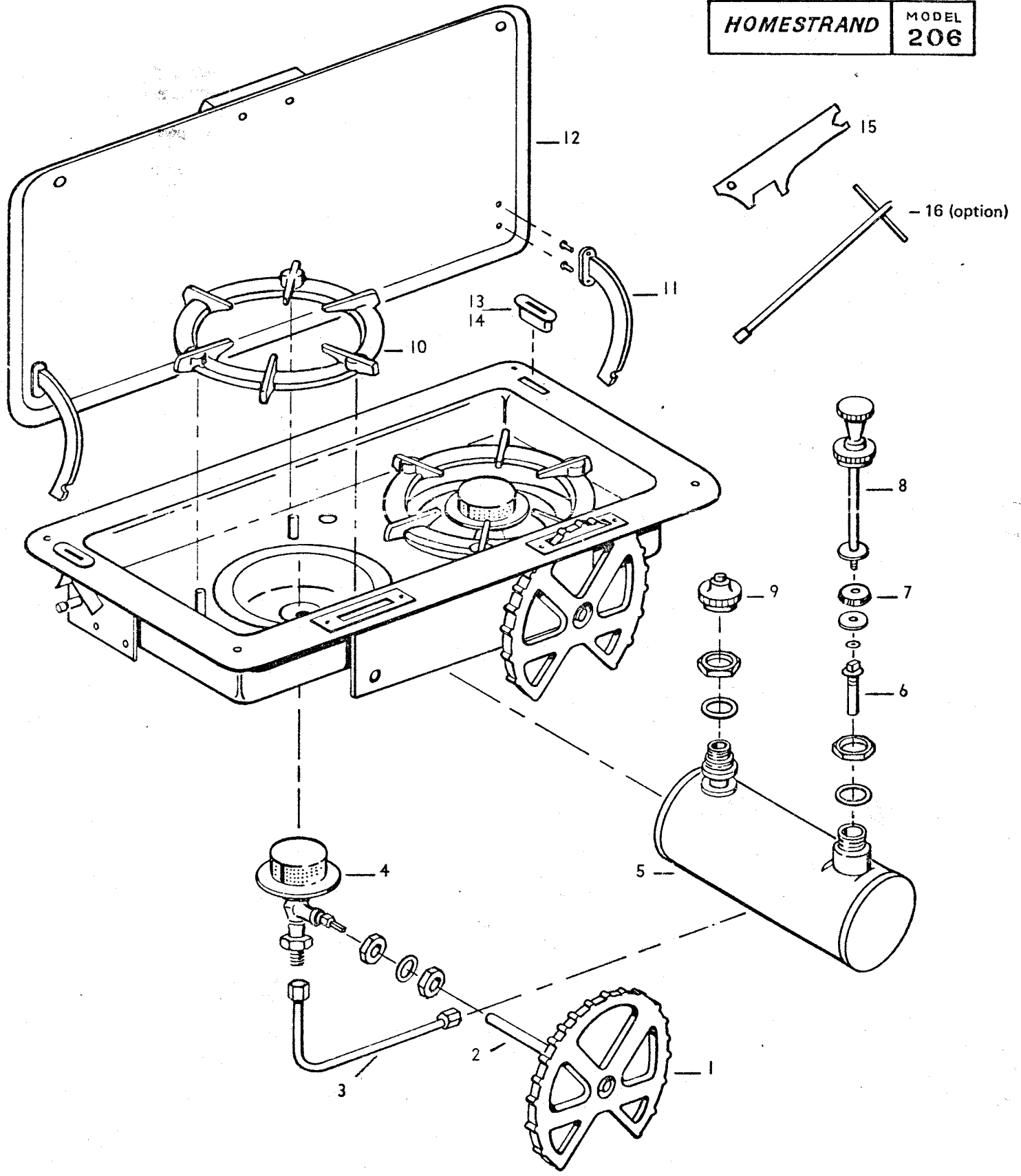
**Clearance:** The stove extends 6" below upper surface of counter. It is essential that the part of stove that is below counter be free of any objects that may come in contact with piping or bottom of stove since these parts are hot when stove is in operation.

Unless the construction of cabinet is such that no objects such as rags, papers or other combustible materials can come in contact with bottom of stove, a protective wire mesh basket or perforated metal enclosure must be installed. Wire mesh having adequate rigidity should be used to allow circulation of air. Solid metal should not be used.



# PARTS LIST FOR HOMESTRAND ALCOHOL STOVE

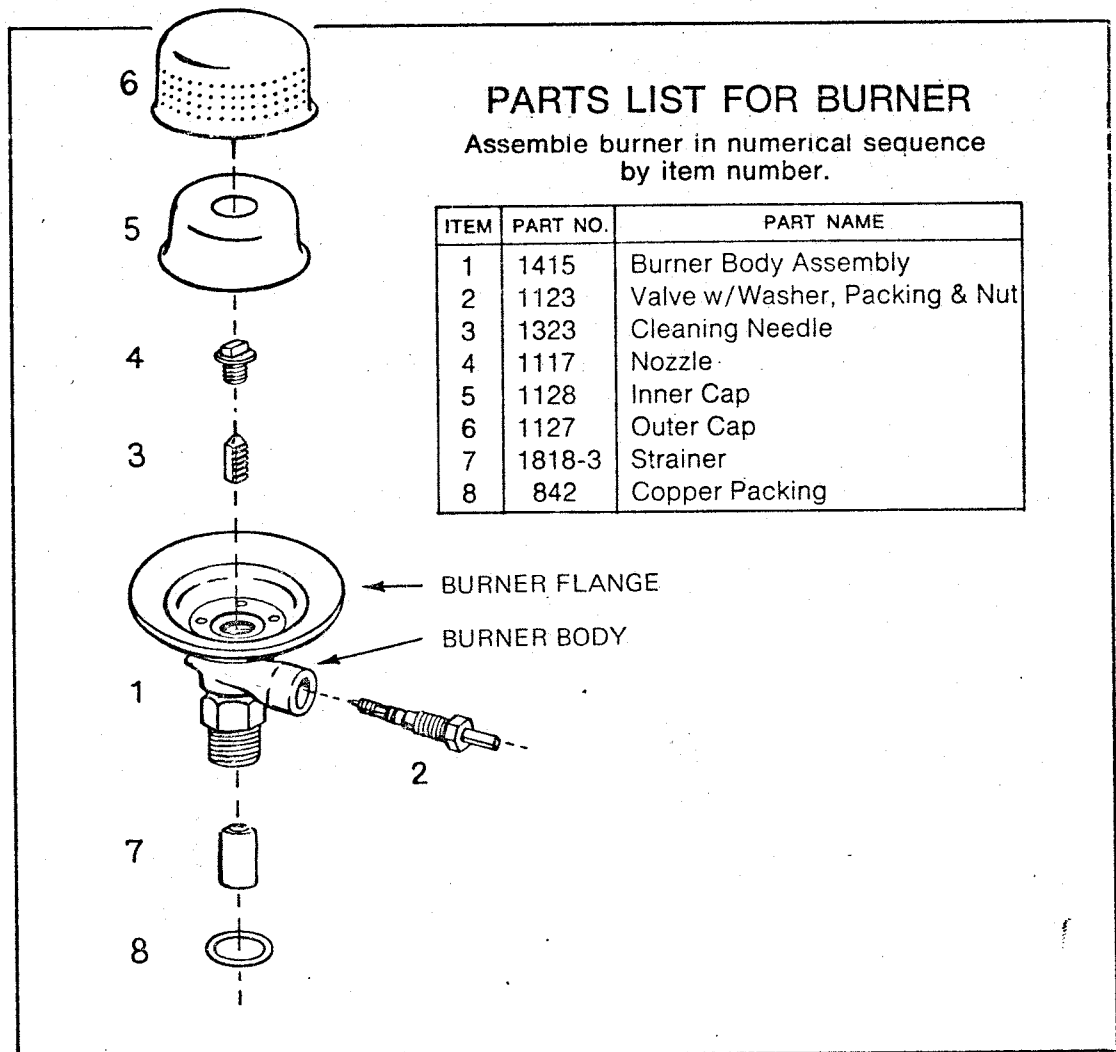
|                   |                      |
|-------------------|----------------------|
| <b>HOMESTRAND</b> | <b>MODEL<br/>206</b> |
|-------------------|----------------------|



Note: A Model 209 is a Model 206 less items 11, 12 and 13.

## PARTS LIST

| Item        | Model 206 | Model 209 | Part Number | Part Name                      |
|-------------|-----------|-----------|-------------|--------------------------------|
| 1           | x         | x         | H-1150      | Control Wheel                  |
| 2           | x         | x         | H-1273      | Stem                           |
| 3           | x         | x         | H-1152      | Feed pipe                      |
| 4           | x         | x         | H-1322      | Burner Assembly                |
| 5           | x         | x         | H-1336      | Tank Assembly                  |
| 6           | x         | x         | H-1332      | Check Valve                    |
| 7           | x         | x         | H-1233      | U-cup                          |
| 8           | x         | x         | H-1231      | Pump Complete                  |
| 9           | x         | x         | H-1333      | Cap                            |
| 10          | x         | x         | H-1186      | Grate                          |
| 11          | x         | —         | H-1050      | Lid Stay                       |
| 12          | x         | —         | H-1267      | Lid Complete                   |
| 13          | x         | —         | H-1064      | Bushing                        |
| 14          | —         | x         | H-1743      | Hole Cover                     |
| 15          | x         | x         | TA-1006     | Wrench, Adjusting              |
| 16 (option) | x         | x         | H-525       | Wrench, Nozzle and Check Valve |



# INSTALLATION INSTRUCTIONS

## MODEL 211/209

**Important:** Installation to comply with the ABYC and/or "Fire Protection Standards for Motor Craft," NFPA No. 302.

**Location:** Choose a countertop location allowing clearance for the following stove dimensions (see figure 1): Length, side to side, 24-5/8 inches; depth, front to back, 16-3/8 inches; minimum bottom clearance (height) below the top of the counter of 7-1/4 inches.

**Cutout:** Draw an outline of the countertop cutout, 23-7/8 x 15-1/2 inches, centering it in the dimensions of the location selected.

**Frame Installation:** Position the countertop-gimbal frame assembly in the cutout. The gimbal lock should be at the front of the stove. Secure the counter frame to the counter with the 4 No. 7 oval head wood screws.

**Counterweight:** Install counterweight support yoke with screws supplied. Note profile is assymetrical. See fig. 2 for correct installation. Bolt counterweight to support yoke . . . position approximately in middle of adjustment range. Final adjustment should be made after stove is installed.

**Stove Installation:** Handle stove carefully to avoid damage to control wheels. Tilt stove lowering one end into gimbal frame. Slide stove until other end is free to drop into final position. Secure with 4 machine screws provided.

**Counterweight Adjustment:** Slide metal counterweight as required to level stove, then tighten bolts.

FIG. 1

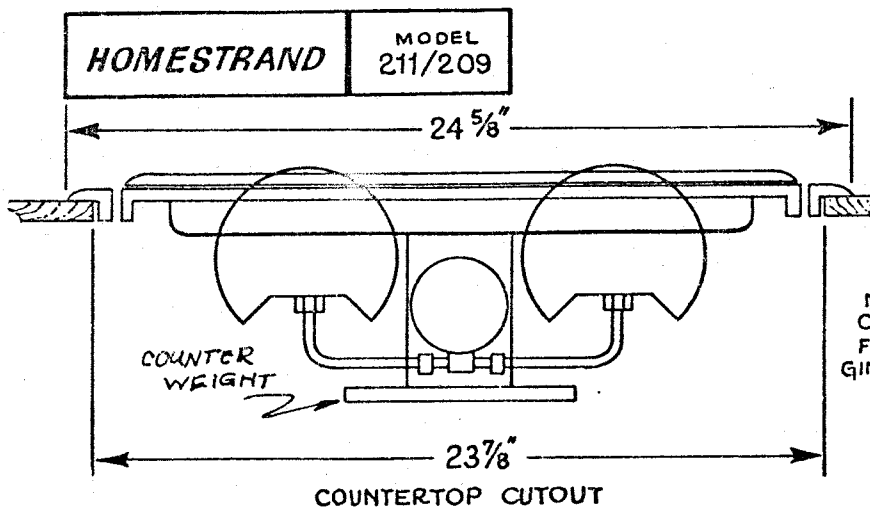
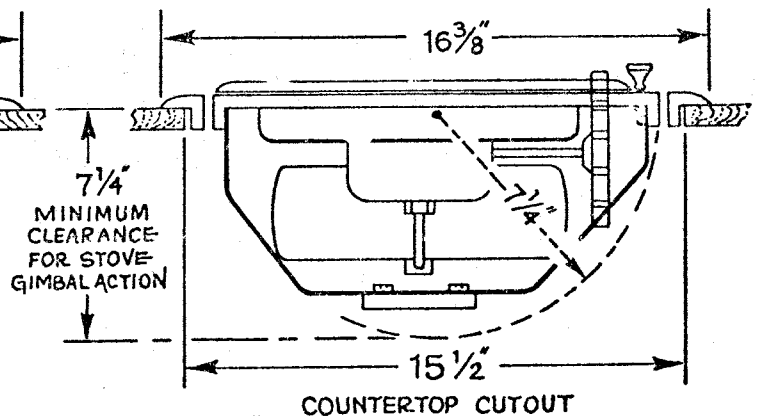
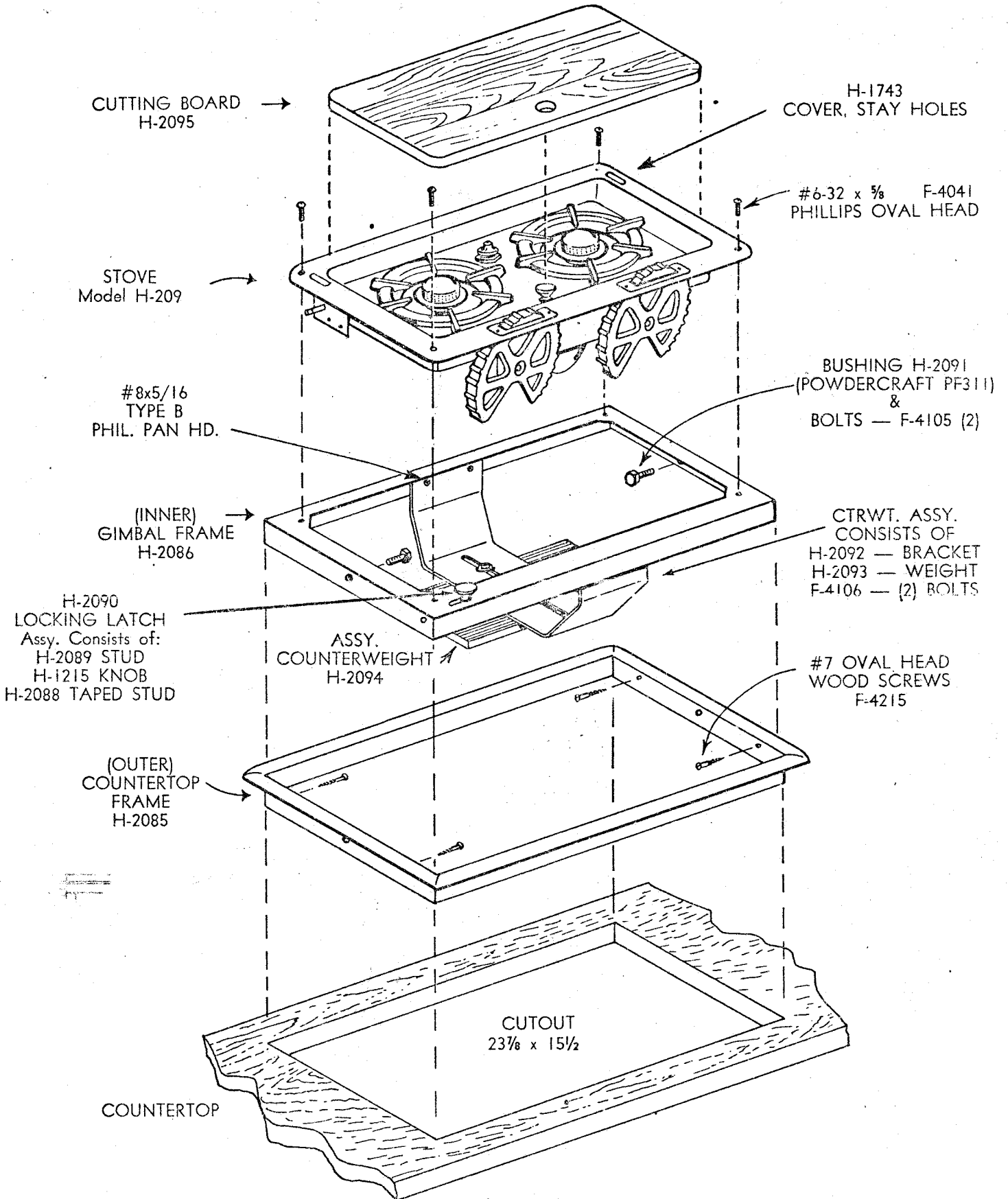


FIG. 2



H-209 IS RECESSED STOVE  
H-211 IS GIMBAL KIT FOR STOVE



**WARNING: INSTALLATION SHOULD COMPLY WITH APPLICABLE STANDARDS OF THE ABYC AND/OR THE "FIRE PROTECTION STANDARDS FOR MOTOR CRAFT, NFPA #302." BE SURE TO PROVIDE ADEQUATE VENTILATION, PERMANENT AND SECURE FASTENING OF THE STOVE AND PROTECTION FOR ALL SURROUNDING WOODWORK.**

## HELPFUL HINTS FOR ALCOHOL STOVES

- 1) To obtain maximum performance from your new stove, it is extremely important that you use a quality grade denatured alcohol, free from impurities.
- 2) If you find a small flame where the control stem enters the burner, tighten the nut slightly until flame no longer appears. Fig. 1.
- 3) Should you notice alcohol in or around the pump, the check valve located in the bottom of the pump barrel leaks and must be replaced.
- 4) If the pump bounces back when you try to pump, the check valve is stuck and should be replaced.
- 5) If you pump and get little or no pressure in the tank, the pump leather or U-cup (depending on age of your stove) needs replacing or oiling.
- 6) If your stove lights but goes out after a while your filler cap leaks or you did not pump enough.
- 7) If no alcohol comes through the burner when you attempt to prime, you have no pressure in the tank or a filter clogged by dirty alcohol. The filter seldom clogs but when it does your stove must be serviced by trained personnel.
- 8) If you order spare parts please give stove Model and Serial number to make sure the correct parts are shipped.

### TIGHTEN VALVE PACKING

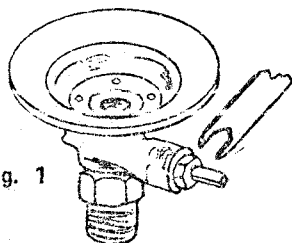


Fig. 1

### REMOVAL OF BURNER CAP

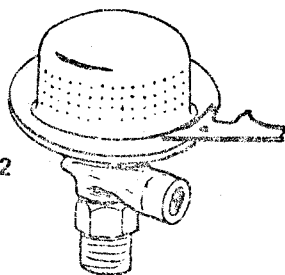


Fig. 2

### ADJ. CALIBRATION DISK

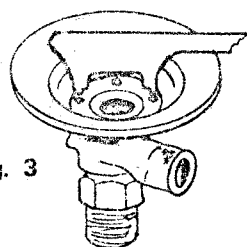


Fig. 3

### BURNER CALIBRATION

This stove is equipped with new burners. If calibration is required, follow this procedure, which differs from that in the instruction manual.

1. Light Burners as per instruction manual.
2. Observe flame. If flame is orange or light blue and pulsing, a calibration of the air/fuel ratio will be necessary.
3. To adjust the air/fuel ratio, with burners lit, hold burner flange with a pair of pliers and rotate the flange. This rotation should prove to be no more than 1 or 2 degrees of shift.
4. Adjust until a steady blue flame is achieved.

